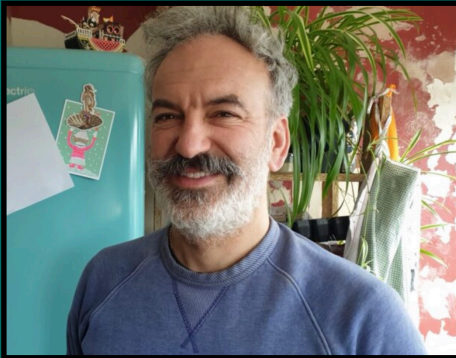


# Professional Mentors and Collaborators

## Eve Leigh - Writer

Eve is an award-winning, internationally recognised writer and dramaturg working between theatre, screen, games, installation, and digital art. She will be offering guidance on my creative writing during the first phase of the development.

<https://www.eveleighwriter.com>



## Joel Gray - Artist

Joel is an artist and sculptor who specialises in immersive work. He has created performances for Tate Modern, Tate Britain, British Museum and the ICA. He is currently master stone carver for Anish Kapoor. Joel will be offering guidance during the building phase of the development.

## Spinney Hollow

Spinney Hollow is a 10 acre woodland project on the edge of the South Downs near Winchester. They host rural craft courses and arts events as well as managing the wood. Spinney Hollow will provide space and expertise in kind to support the building phase of the development.

<http://www.spinneyhollow.co.uk>



## Emma Connor - Psychotherapist

Emma is a practising child psychotherapist and director of Your Space Therapies which provides counselling, play therapy and psychotherapy to primary and secondary schools across Sussex, Surrey and Hampshire. She will be advising me during the third stage of development to create an immersive experience that helps to improve mental wellbeing.

<https://yourspacetherapies.org>

## Serena Manteghi - Theatre maker / dramaturg

Serena is an award winning theatre practitioner, facilitator and performer, working extensively in new writing, devising/ development and non-traditional storytelling. She will be assisting on the fourth stage of development to help explore ways to facilitate the audience's experience.

